



# MARTIN

## CUTTING TOOLS

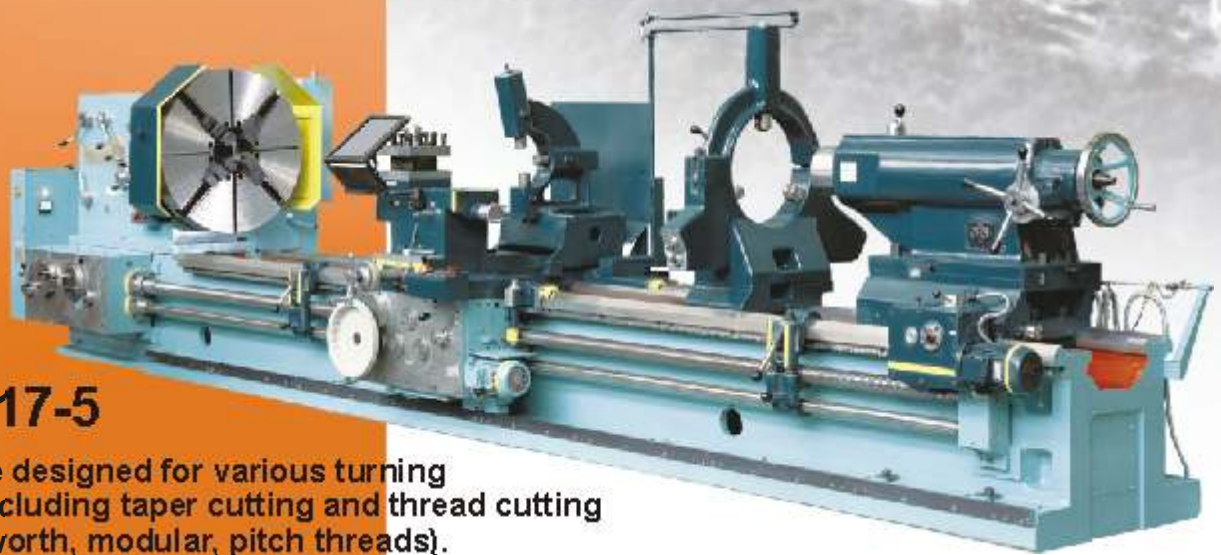
NEW & USED MACHINE TOOLS AND ACCESSORIES



### RYAZAN MACHINE TOOL WORKS



## SPECIAL ENGINE LATHE MODEL RT117



### RT117-5

The lathes are designed for various turning operations, including taper cutting and thread cutting (metric, Whitworth, modular, pitch threads).

High main drive power and rigid bed combined. With wide range of spindle speeds ensure usage of high-end cutting tools for machining various materials.



### RT117-8

Design features:

- Rigid, vibration-proof and temperature-resistant structure allows of high machining accuracy
- Accuracy stability and long working life of the lathe are ensured by the two Prismatic bed ways and other components' high reliability
- Long taper turning is done by simultaneous longitudinal feed of the carriage and cross feed of the slide swiveled at a desired angle
- All kinematic gears are made of alloy steel, hardened and ground
- Chuck and cutting area guards as well as electrical and mechanical lockouts ensure safe operation
- arriage is designed with guide ways of its own
- Motorised tailstock is available on customer request

The model can be built with distance between centers as long as 16 meters for machining big pieces.

# Special engine lathe model RT117

## Technical features

Swing over bed	47,2" (1200 mm)
Swing over carriage	35,4" (900 mm)
Maximal diameter machined over bed	44,9" (1140 mm)
Maximal diameter machined over carriage	35,4" (900 mm)
Range of workpiece lengths	118,1"...315" (3000, 4800, 8000 mm)
Maximal workpiece weight	17637 lbs /8000 kg (22026,4 lbs /10000 kg)*
Height of cutting tool	1,97" (50 mm)
Spindle bore	5" (128 mm)
Tailstock spindle inner taper	Metric 140
Spindle speed range	5-500 (630) rpm*
Carriage working feed range:	
Lengthwise	0,002-0,095"/rev; 0,002-0,762"/rev* (0,06-2,42 mm/rev)
Crosswise	0,0009-0,035"/rev; 0,0009-0,277"/rev* (0,022-0,88 mm/rev)
Tool slide	0,0009-0,035"/rev; 0,0009-0,277"/rev* (0,022-0,88 mm/rev)
Carriage rapid travel:	
Lengthwise	118,1"/min (3000 mm/min)
Crosswise	39,4"/min (1000 mm/min)
Cut threads range:	
Metric, mm	0,04-3,8" (1-96 mm)
Whitworth, T.P.I.	24-0,25
Modular, module	0,5-24
Pitch	96-1
Number of spindle speed	24
Maximal spindle torque	7008,7 ft lbs (9,5 kNm)
Main drive power	29,5 HP/22 kW (40,2 HP/30 kW)**
Overall dimensions:	
Length	161,4...748,03" (4100...19000 mm)
Width	83,07" (2110 mm)
Height	78,74" (2000 mm)
Lathe weight	24251...66139 lbs (11000...30000 kg)
Width of the bed (by guide-ways)	31"(770 mm)

\* as an option to a special order

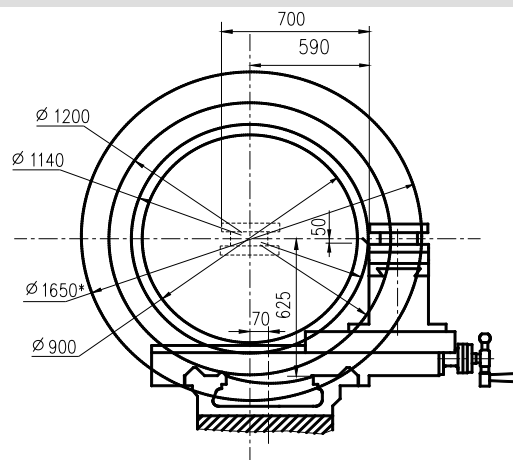
\*\* for machine with 196,8" (5000 mm) DBC and longer

### Standard accessories:

- 4-jaw chuck (diam. 39,7"/1000 mm);
- Levelling pads;

### Options:

- closed rest (diam. 3,9-19,7"/100-500mm);
- open rest (diam. 19,7-31,5"/500-800 mm);
- follow rest (diam. 2,8-9,8"/70-250 mm);
- 4-jaw chuck diam. 49,2"/1250 mm;
- 4-jaw chuck diam. 24,8"/630 mm;
- 3-jaw chuck diam. 16"/400 mm;
- steady rest (diam. 17,3-27,6"/440-700 mm);
- thread indicator;
- grinding attachment;
- taper turning attachment;
- boring bar holder;
- DRO;
- open rest (diam. 25,6-35,4"/650-900 mm);
- heavy duty closed roller type rest diam. (7"-26" /180-650 mm)



Ryazan Machine Tool Works  
7, Stankozavodskaya Str.,  
Ryazan 390042, Russia

Commercial department +7 (4912) 932727, 932813, 932815, 339339  
Parts & service department +7 (4912) 932816  
Logistics & customs clearance department +7 (4912) 932814  
Import group +7 (4912) 932813  
e-mails: vtf@rsz.ru; rsz@stankozavod.ryazan.ru  
web site: www.rsz.ru

# MARTIN

## CUTTING TOOLS



NEW & USED MACHINE TOOLS AND ACCESSORIES

3661 - 93 Street, Edmonton, Alberta, Canada T6E 6N6

www.martincuttingtools.com

Tel: (780) 436-4607 • Fax: (780) 438-1154

Toll Free: (866) 266-4589

E-Mail: Martin@martincuttingtools.com